

Compatibility Testing Guide

VMware Lab Platform

v2.2

Overview

The *VMware Lab Platform* (VLP) is a contemporary solution that provides a simple browser-based method of accessing labs hosted by VMware.

Prior to accessing labs via VLP, you should check to ensure that your network and browser are compatible. This document provides a simple test procedure to validate all necessary aspects.

Frequently Asked Questions

What are the technical requirements for accessing the labs through VLP?

An Internet connection and a modern HTML5-capable browser. The following browsers are supported. As a best practice, use the latest available version.

- Internet Explorer version 10 and above
- Firefox version 13 or above
- Chrome version 18 or above
- Safari version 6.0 or above

I'm behind a firewall/proxy – what else do I need to know?

You must be able to reach these VLP servers:

- | | |
|--|---|
| • <code>www.learningplatform.vmware.com</code> | Note: Should respond to ICMP ping. |
| • <code>content.learningplatform.vmware.com</code> | Note: Will <i>not</i> respond to ICMP ping. |
| • <code>ws.learningplatform.vmware.com</code> | Note: Will <i>not</i> respond to ICMP ping. |
| • <code>login.learningplatform.vmware.com</code> | Note: Will <i>not</i> respond to ICMP ping. |

Notes:

- Connectivity on TCP ports 80, 443, 8443 is required, not ICMP pings.
- If you use a proxy, it must support HTML5 WebSockets otherwise VLP won't function.

How do I test VLP compatibility with my network and browser?

Follow the steps described later in this document to verify compatibility and connectivity.

What if the VLP compatibility test fails?

In the rare situation that the VLP connectivity test fails, please provide as much information as possible to your Education representative so that they can assist with diagnosing the issue.

Validating VLP Compatibility

Run the *VLP Compatibility Checker* to validate browser compatibility and network performance.

<https://www.learningplatform.vmware.com/eduilt/compatibility/>

vmware®
LAB PLATFORM

LOGIN/REGISTER | PRIVACY | ENGLISH

Test Your Browser Compatibility

VMware Lab Platform is a cutting edge application that uses some newer features that may not be supported by your browser. Run the tests below to check your browser's compatibility.

Run Tests

- Cookies
- Web Storage
- Canvas
- WebSockets
- Web Proxy
- Browser
- Window/Tab Size
- New Windows/Popups
- Network Connection

Powered by
vmware
LAB PLATFORM

This will validate your browser type, version, and available functionality, and finally network performance. Click **Run Tests**, review the results, and address any issues that are highlighted.

Network Connection ✓

This speed test will help us evaluate any potential performance issues you are having with VMware Lab Platform that may be related to network bottlenecks. The test will be run twice, connecting to a different server each time. It first tests latency (network delay) and then speed (network bandwidth).

ESTIMATED SPEED	156.4 Mb/s	■
CLOUD LATENCY	45 ms	■
VLP LATENCY	24 ms	■

Recommended Scores

- Latency - A good latency score would be less than 300 ms; the lower the better
- Speed - A good speed score would be greater than 1.5Mb/s; the higher the better

Disclaimer: After running this test, VMware will collect certain information about your browser and network connection. By running this test, you authorize VMware to collect this information.

Your connection is sufficient.

- Results less than 300 ms are shown in green
- Results greater than 300 and less than 450 ms are shown in amber
- Results greater than 450 ms are shown in red
- A good speed (bandwidth) score is 1.5 Mb/s or greater.
- A good latency score is 300ms or less.

If your network performance is inadequate, address the issue as much as possible.

- Try a different network or Internet provider.
- If using a Wifi network, try a hard-wired network instead.
- Ensure that your network is not saturated with other traffic e.g. streaming video.
- Disable any VPN that may be active – this can add significant overhead and latency.

VLP may still function adequately even if you are not able to improve your network performance but you may experience periods of poor lab responsiveness during your class.

Testing VLP Functionality

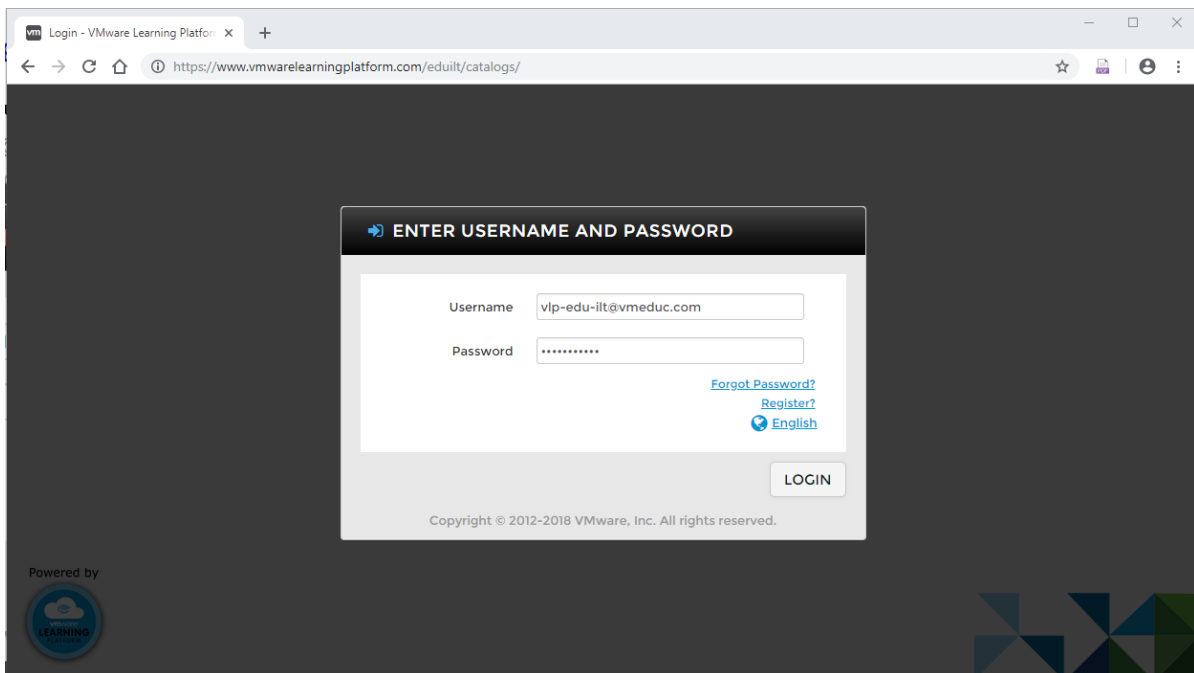
Using a suitable browser navigate to the following URL:

<https://www.vmwarelearningplatform.com/eduilt/catalogs/enrollments>

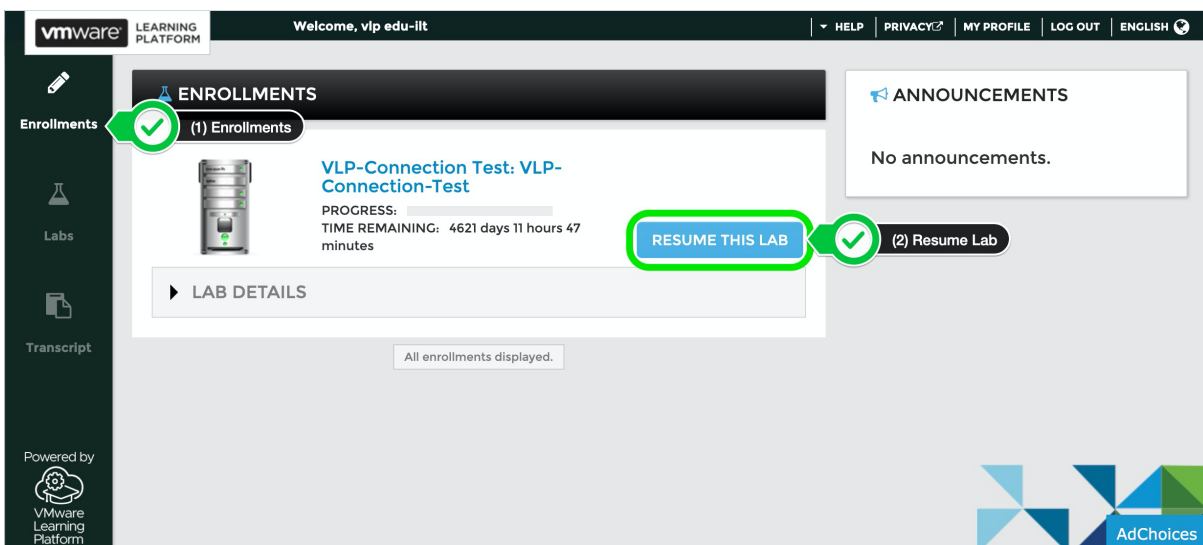
Login using the following credentials:

Username: vlp-edu-ilt@vmeduc.com

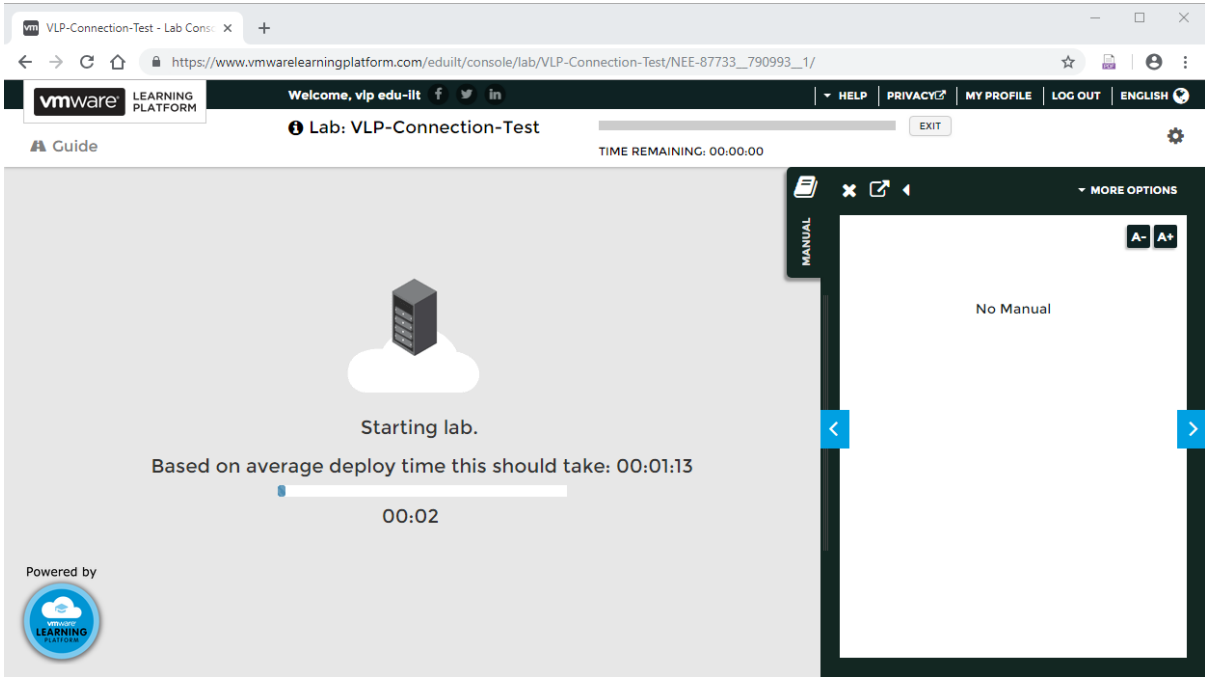
Password: VMware2017!



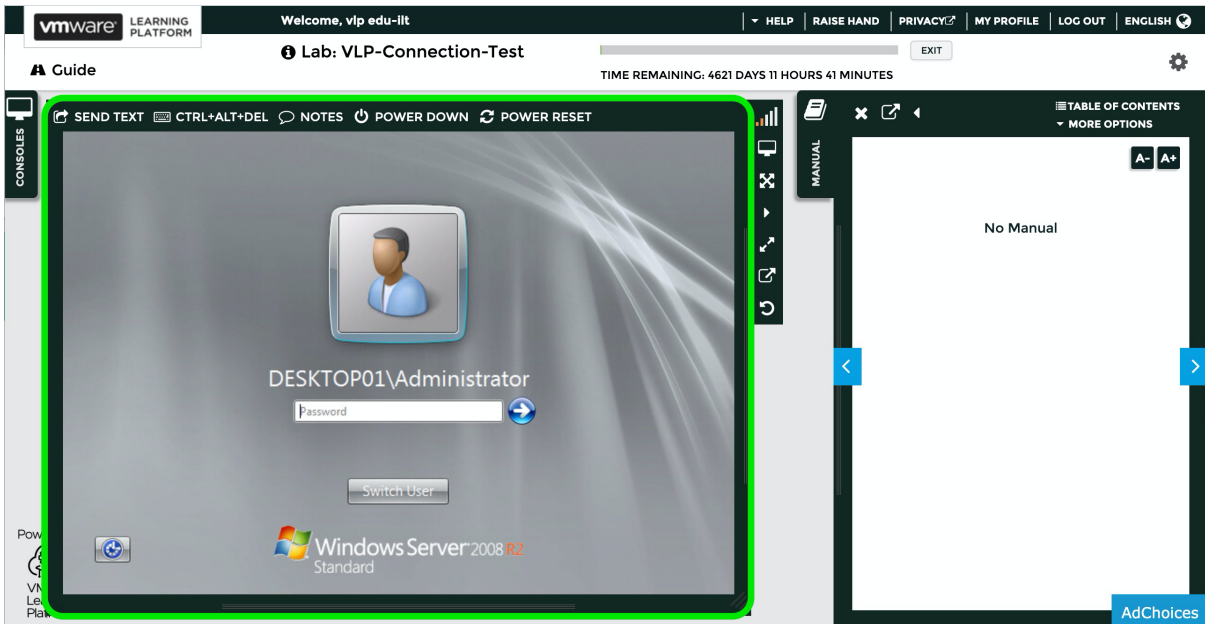
Under ENROLLMENTS you should see the *VLP-Connection Test: VLP-Connection-Test* lab. Click on **ENROLLED**.



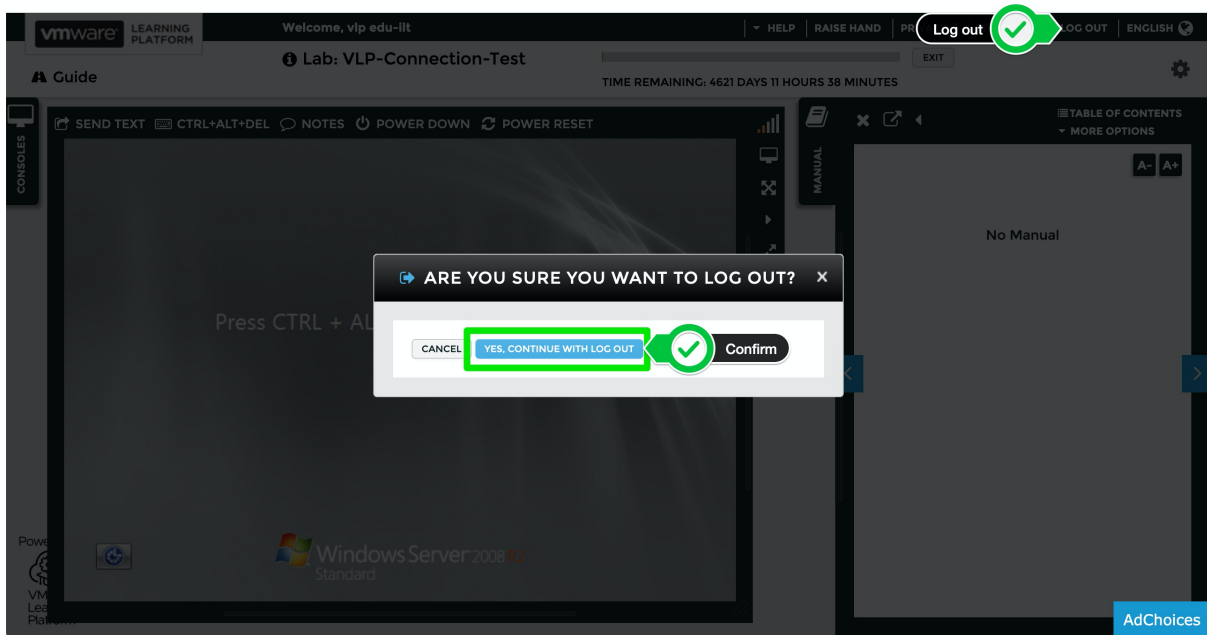
The lab environment will now start:



You should now see a Windows console. Click inside the VM console to ensure its active and responds to user interaction.



You can now logout.



This concludes the functionality test.

